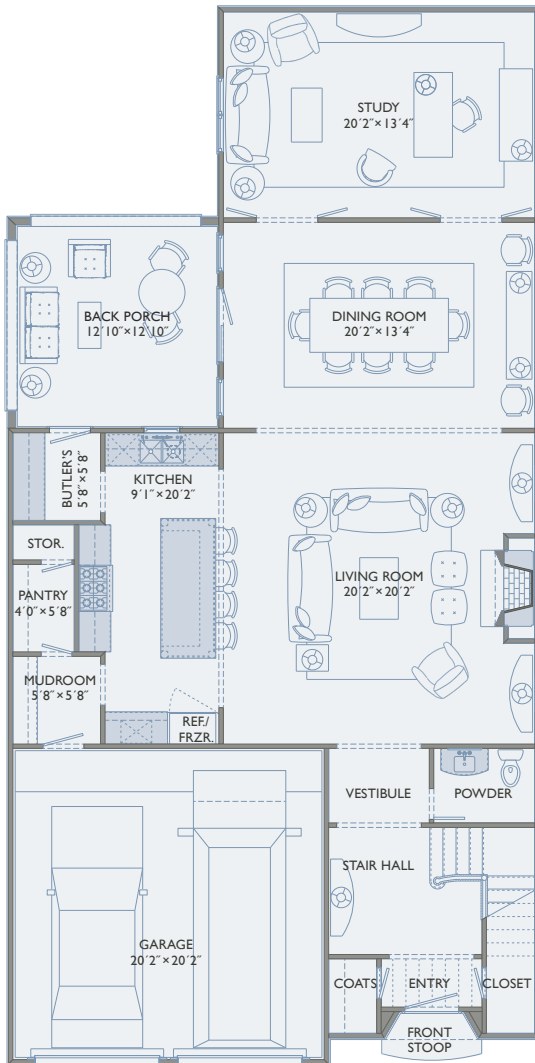




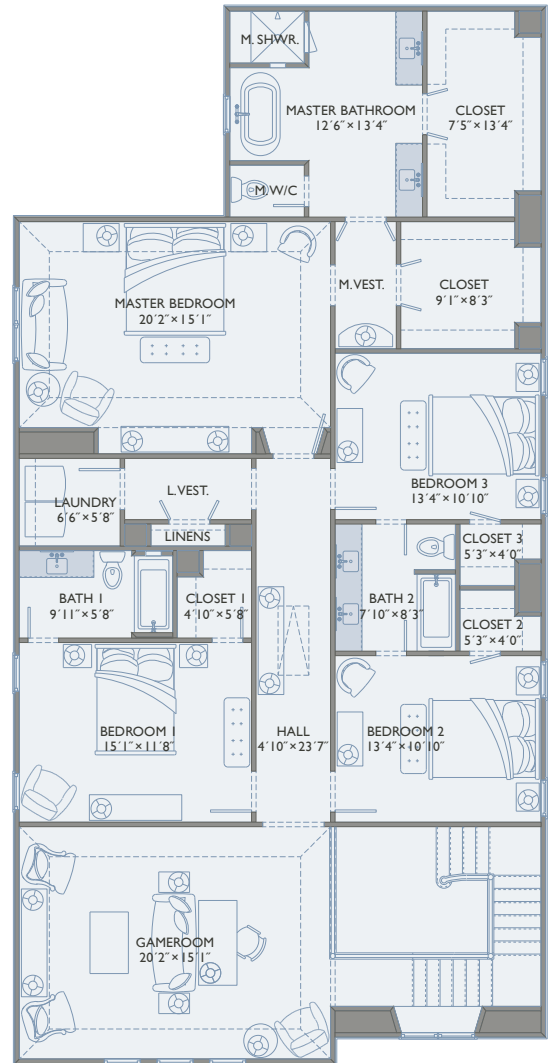
# MARAVILLA COURT

## UNIT D-3



### FIRST FLOOR

Interior - 1,538 Square Feet  
Patio - 187 Square Feet



### SECOND FLOOR

Interior - 2,155 Square Feet

A DEVELOPMENT BY BUTLER BROTHERS

1717 PINE CHASE DRIVE | HOUSTON, TEXAS 77055 | TEL 713.558.3308 | MARAVILLACOURT.COM



BUTLER BROTHERS



PRICES AND SPECIFICATIONS SUBJECT TO CHANGE WITHOUT NOTICE. PLEASE NOTE THESE IMAGES ARE MEANT TO EVOKETHE CHARACTER & MOOD OF THE DESIGN AND NOT MEANT TO REPRESENT EXACT FEATURES OR MATERIALS. THIS INFORMATION IS DEEMED RELIABLE BUT NOT GUARANTEED.

Martha  
Turner | Sotheby's  
INTERNATIONAL REALTY



# MARAVILLA COURT

## UNIT D-3



Interior 3,693 Square Feet  
Patio 187 Square Feet

---

Total 3,880 Square Feet

A DEVELOPMENT BY BUTLER BROTHERS

1717 PINE CHASE DRIVE | HOUSTON, TEXAS 77055 | TEL 713.558.3308 | MARAVILLACOURT.COM



BUTLER BROTHERS



PRICES AND SPECIFICATIONS SUBJECT TO CHANGE WITHOUT NOTICE. PLEASE NOTE THESE IMAGES ARE MEANT TO EVOKETHE CHARACTER & MOOD OF THE DESIGN AND NOT MEANT TO REPRESENT EXACT FEATURES OR MATERIALS. THIS INFORMATION IS DEEMED RELIABLE BUT NOT GUARANTEED.

Martha  
Turner

Sotheby's  
INTERNATIONAL REALTY